

Clarifications:

There are 2 different slip stitches used in this pattern.

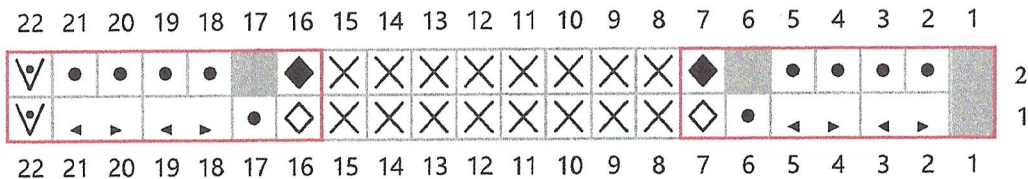
Slip Stitches: The slip stitch as part of the Hatch Stitch is slipped as if to purl with yarn in back.

The slip stitch at the end of both rows is slipped as if to purl with yarn in front.

Below is a new chart for you to practice the right and left borders of the Hatch Stitch pattern. It's a better way of diagramming the chart. Thanks to Teresa.

Right and Left Hatch Stitch Borders

Key



- Purl
- place marker
- Knit
- RS: slip purlwise with yarn in front
WS: slip
- slip marker
- no stitch
- HC: sl 1, k1, yo, pass slip st over both the knit and yo
- 2 Row HC repeats working from right to left for both rows

The chart shows both sides of the Hatch Stitch Borders in one row.
 Row 1 is the right side row and row 2 is wrong side row.
 Both rows will be knitted right to left.
 The stitches 8-15 you do whatever stitch you want to do on your practice piece.

Written Instructions:

Row 1 (RS): K1, *Sl1, k1, yo, pass slip st over both the knit and yo sts* repeat 1 time, p1.
 Place marker and work stitch pattern until last 6 stitches.
 Slip marker, p1 *Sl1, k1, yo, pass slip st over both the knit and the yo sts* repeat 1 time,
 slip last stitch with yarn in front.